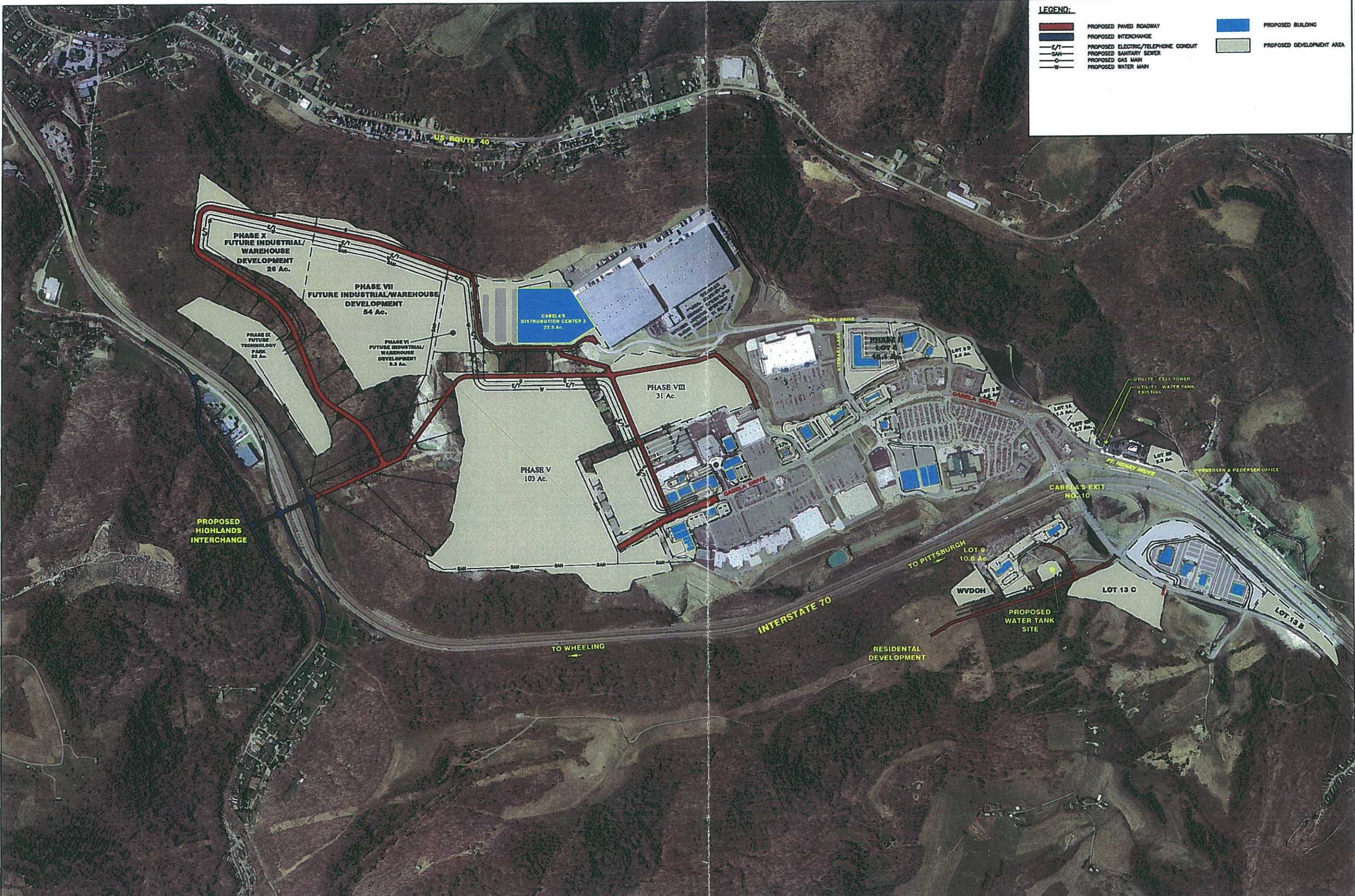


LEGEND:

- PROPOSED PAVED ROADWAY
- PROPOSED BUILDING
- PROPOSED INTERCHANGE
- E/T PROPOSED ELECTRIC/TELEPHONE CONDUIT
- SAN PROPOSED SANITARY SEWER
- C PROPOSED GAS MAIN
- W PROPOSED WATER MAIN
- PROPOSED DEVELOPMENT AREA



PROPOSED HIGHLANDS INTERCHANGE

PHASE V
103 Ac.

PHASE VII
FUTURE INDUSTRIAL/WAREHOUSE
DEVELOPMENT
54 Ac.

PHASE X
FUTURE INDUSTRIAL/
WAREHOUSE
DEVELOPMENT
26 Ac.

PHASE VIII
31 Ac.

CABELA'S
DISTRIBUTION CENTER 3
22.5 Ac.

PHASE VI
FUTURE INDUSTRIAL/
WAREHOUSE
DEVELOPMENT
9.3 Ac.

PHASE IX
FUTURE
TECHNOLOGY
PARK
22 Ac.

INTERSTATE 70

RESIDENTIAL
DEVELOPMENT

CABELA'S EXIT
NO. 10

TO PITTSBURGH

TO WHEELING

WVDOH

PROPOSED
WATER TANK
SITE

LOT 13 C

LOT 13 B

LOT 9
10.8 Ac.

LOT 11 A
2.5 Ac.

LOT 11 B
2.5 Ac.

LOT 8
12.5 Ac.

PEDERSEN & PEDERSEN OFFICE

UTILITY - CELL TOWER
UTILITY - WATER TANK
EXISTING

BOB WISE DRIVE

STEWART LANE

LOT 10
2.5 Ac.

LOT 12
2.5 Ac.

LOT 13 A
2.5 Ac.

LOT 13 B
2.5 Ac.

LOT 13 C
2.5 Ac.

LOT 13 D
2.5 Ac.

LOT 13 E
2.5 Ac.

LOT 13 F
2.5 Ac.

LOT 13 G
2.5 Ac.

LOT 13 H
2.5 Ac.

LOT 13 I
2.5 Ac.

LOT 13 J
2.5 Ac.

LOT 13 K
2.5 Ac.

LOT 13 L
2.5 Ac.

LOT 13 M
2.5 Ac.

LOT 13 N
2.5 Ac.

LOT 13 O
2.5 Ac.

LOT 13 P
2.5 Ac.

LOT 13 Q
2.5 Ac.

LOT 13 R
2.5 Ac.

LOT 13 S
2.5 Ac.

LOT 13 T
2.5 Ac.

LOT 13 U
2.5 Ac.

LOT 13 V
2.5 Ac.



REFERENCES		
REF. #	DESCRIPTION	SHT. #



REVISIONS					
REV.	REVISION DESCRIPTION	DATE	BY	CHKD	APPR

PEDERSEN & PEDERSEN, INC.
 Consulting and Environmental
 Engineering Services
www.pederseninc.com

411 Mary-Yvonne Road
 Suite 200
 Williams, PA 15080
 (724) 866-8200

80 Cross Road
 Treadwell, NY 12160
 (304) 847-1025

1001 Main Street
 Fairport, NY 12024
 (304) 748-6100

CLIENT	OHIO COUNTY DEVELOPMENT AUTHORITY (304) 234-3893	DRAWN	JTC	ISSUE DATE	04/08/10	REV. #	0
PROJECT	THE HIGHLANDS OHIO COUNTY, WEST VIRGINIA	CHECKED	JEO	PROJECT #	WV-122	SCALE	1"=400'
APPROVED	JEO	DATE	04/08/10	SHEET TITLE	MASTER DEVELOPMENT PLAN	DATE	04/08/10
DATE	04/08/10	DATE	04/08/10	SHEET #	48-SP-48	SCALE	1"=400'
						SHEET	1 of 1